



63 Wigmore Street, Marylebone Offices To Let

Centrally located

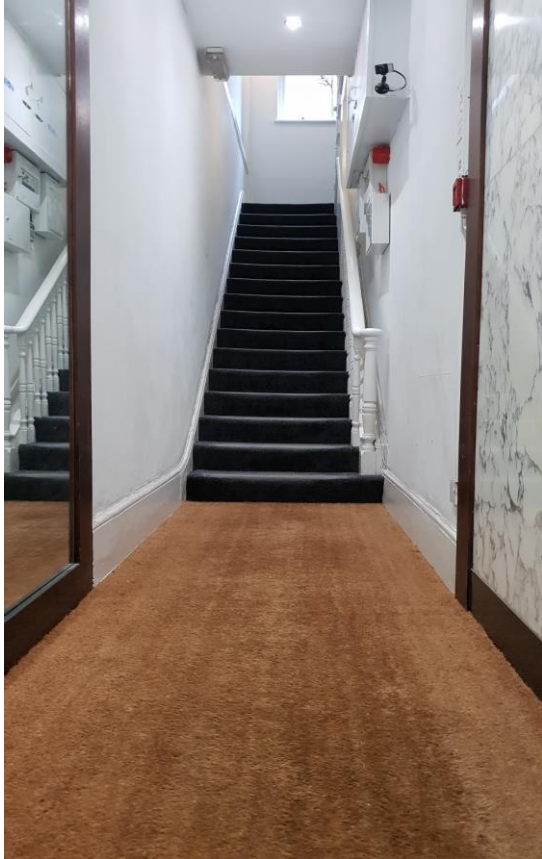
2nd Floor **145 SQ FT**

2nd Floor Rear
63 Wigmore Street
London
W1U 1BQ



Location

The property is situated in a prime spot on Wigmore Street, within a few minute's walk of Bond Street Underground Station (Central and Jubilee line), and the quaint through-fare of St Christopher's Place, set back from the busy Oxford Street. The property benefits from proximity to numerous coffee houses, boutiques and restaurants. This office benefits from being within Marylebone and a prime West End location



Description

Period building offering this character office suites with excellent natural light.

*24 hour access

*Common WCs and kitchenette areas

*High ceilings

*Entryphone system

Use

B1 Offices

Rent

On application

Service Charge

Rent includes service charge and utilities but is exclusive of business rates, building insurance contributions and telephones

Business Rates 2020/2021

All parties advised to make their own enquiries.

EPC

Available on request

Professional Costs

Each party to pay their own legal costs in this transaction

**Strictly through Landlord's sole agents
Brecker Grossmith:**

Richard Brecker

Tel. 07836 246 777

Richard@breckergrossmith.co.uk



**Brecker
Grossmith**

63 Wigmore Street, London W1U 1BQ

020 7486 3531

breckergrossmith.co.uk

Brecker Grossmith on behalf of the Landlords of this property whose agents they are, give notice that: These particulars do not constitute an offer or a contract, nor constitute any part of an offer or contract. All statements contained in these particulars are made without responsibility on the part of Brecker Grossmith Ltd. None of the statements contained in these particulars as to the property are to be relied upon as representations of fact. Prospective purchasers must satisfy themselves by inspection or otherwise as to the correctness of each of the statements contained in these particulars. Regulated by RICS. Subject to Contract.