

1<sup>st</sup> Floor Office

15 Grape Street  
WC2H 8DR

764 sq ft / 15+ Desks

Office / Clinic / Workshop

£3,502 PCM inc. (ex. VAT)

Furnished Option

Available Now

breckergrossmith.co.uk  
020 7486 3531







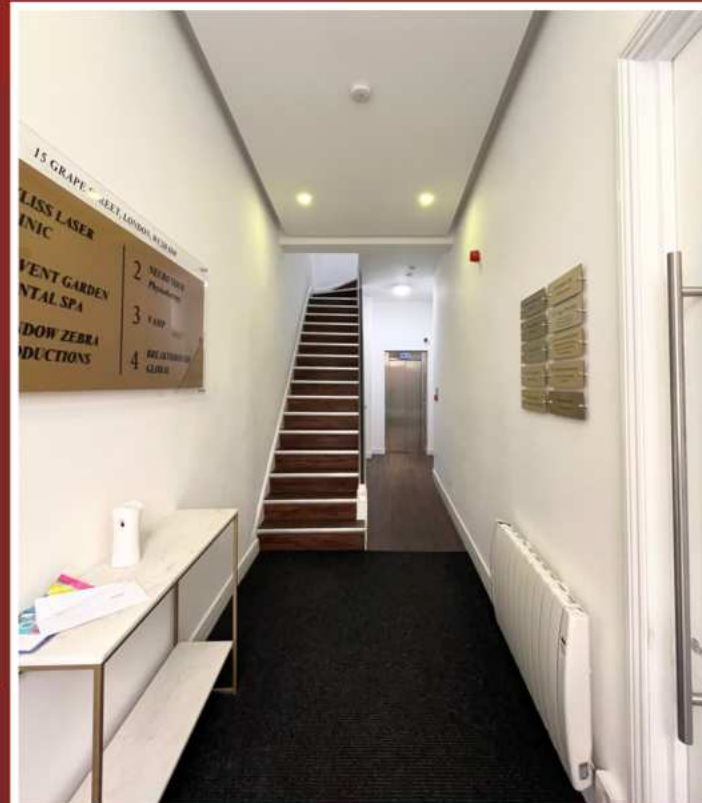
## LOCATION:

Located in London's vibrant West End, 15 Grape Street provides exceptional access to Covent Garden, Tottenham Court Road station, and other key transport links. Surrounded by prominent restaurants, retail, and cultural attractions, this prime space is perfect for dynamic businesses seeking visibility, convenience, and a prestigious Central London address.

## ACCOMMODATION:

The first floor offers high-quality, open-plan office space with excellent natural light, modern finishes, and flexible layout potential.

- Air Conditioning
- Shower Facility
- Lift
- Furniture Available
- Communal Cleaning
- Super-Fast Fibre Internet Available



## USE:

Class E - Office / Clinic / Workshop Usage

Other uses may also be considered,



## TRANSACTION SUMMARY DETAILS

**PRICE:** £42,024 PA (plus VAT), inclusive of Service Charges.

**TERMS:** New lease/licence on terms to be agreed.

**BUSINESS RATES:** Prospective tenants are encouraged to seek further details regarding business rates and associated costs.

**UTILITIES** Electricity is metered separately for each unit

**ADDITIONAL COSTS** Super-fast fibre internet and Furniture can be arranged as per requirement



**CONTACT US TO  
ARRANGE A VIEWING:**

Chris Darbon | 020 7486 3531  
[Chris@breckergrossmith.co.uk](mailto:Chris@breckergrossmith.co.uk)