

1st Floor Office
15 Grape Street
WC2H 8DR

764 sq ft / 15+ Desks

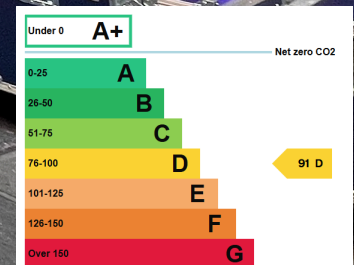
Office / Clinic / Workshop

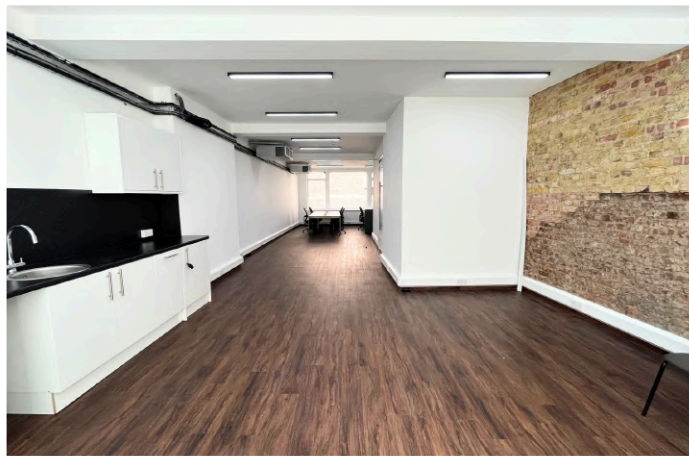
£3,502 PCM inc. (ex. VAT)

Furnished Option

Available Now

breckergrossmith.co.uk
020 7486 3531





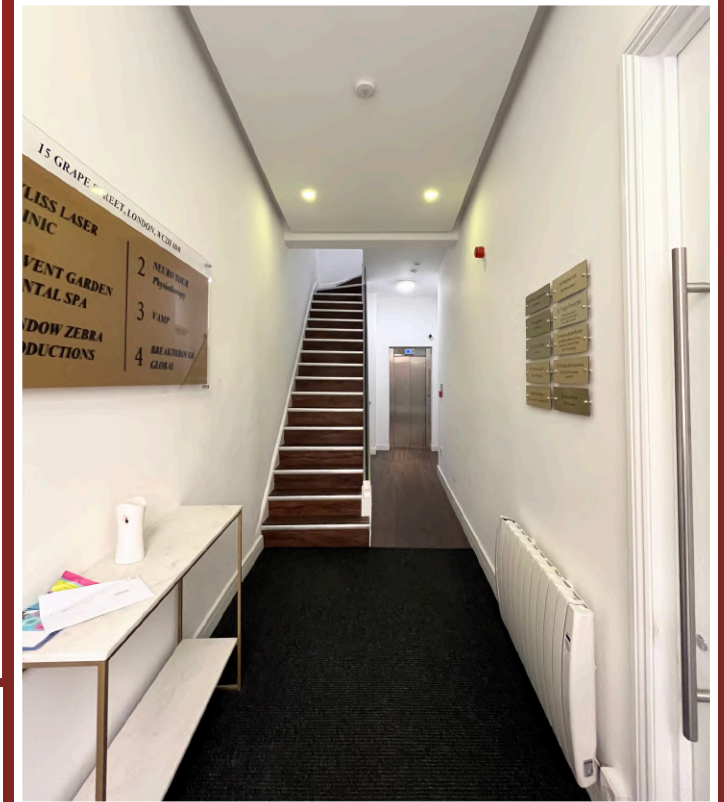
LOCATION:

Located in London's vibrant West End, 15 Grape Street provides exceptional access to Covent Garden, Tottenham Court Road station, and other key transport links. Surrounded by prominent restaurants, retail, and cultural attractions, this prime space is perfect for dynamic businesses seeking visibility, convenience, and a prestigious Central London address.

ACCOMMODATION:

The first floor offers high-quality, open-plan office space with excellent natural light, modern finishes, and flexible layout potential.

- Air Conditioning
- Shower Facility
- Lift
- Furniture Available
- Communal Cleaning
- Super-Fast Fibre Internet Available



USE:

Class E - Office / Clinic / Workshop Usage

Other uses may also be considered,

TRANSACTION SUMMARY DETAILS

PRICE: £42,024 PA (plus VAT), inclusive of Service Charges.

TERMS: New lease/licence on terms to be agreed.

**BUSINESS
RATES:** Prospective tenants are encouraged to seek further details regarding business rates and associated costs.

UTILITIES Electricity is metered separately for each unit

**ADDITIONAL
COSTS** Super-fast fibre internet and Furniture can be arranged as per requirement



**CONTACT US TO
ARRANGE A VIEWING:**

**Chris Darbon | 020 7486 3531
Chris@breckergrossmith.co.uk**